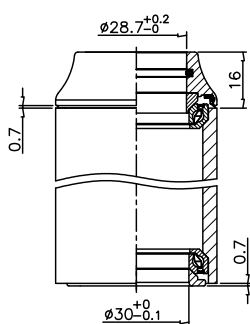


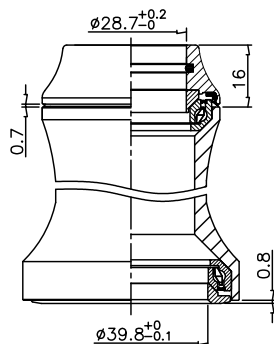
COMPASS serie sterzo / headsets



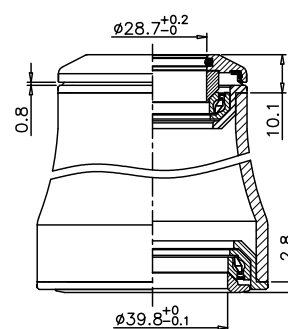
COMPASS CARBON CERAMIC ZV7STEERKITI
 1-1/8" UPPER AND LOWER
 45° CERAMIC ACB - CARBON TOP CAP
 STACK HEIGHT 16+0.7=16.7mm
 HEADTUBE O.D. Ø 46mm - HEADTUBE I.D. Ø 41.2mm



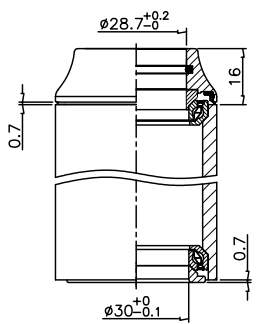
COMPASS 1.5" CARBON CERAMIC ZV7STEERKITG
 1-1/8" UPPER, 1.5" LOWER
 45° CERAMIC ACB - CARBON TOP CAP
 STACK HEIGHT 16+0.8=16.8mm
 HEADTUBE O.D. Ø 46mm/56mm
 HEADTUBE I.D. Ø 41.8mm/52mm



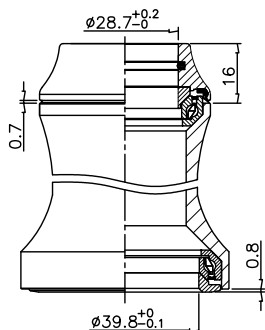
COMPASS 1.5" MTB 733SSSIX
 1-1/8" UPPER, 1.5" LOWER
 45° STAINLESS STEEL ACB - ALLOY TOP CAP
 STACK HEIGHT 10.1+2.8=12.9mm
 HEADTUBE O.D. Ø 50mm/61mm
 HEADTUBE I.D. Ø 44mm/54.9mm



COMPASS CARBON ZV7STEERKITH
 1-1/8" UPPER AND LOWER
 45° STAINLESS STEEL ACB - CARBON TOP CAP
 STACK HEIGHT 16+0.7=16.7mm
 HEADTUBE O.D. Ø 46mm - HEADTUBE I.D. Ø 41.2mm



COMPASS 1.5" CARBON ZV7STEERKITF
 1-1/8" UPPER, 1.5" LOWER
 45° STAINLESS STEEL ACB - CARBON TOP CAP
 STACK HEIGHT 16+0.8=16.8mm
 HEADTUBE O.D. Ø 46mm/56mm
 HEADTUBE I.D. Ø 41.8mm/52mm



Compass è la più aggiornata linea di serie sterzo progettata da Columbus da abbinare alla propria gamma forcelle in carbonio. I modelli da 1-1/8" e 1,5", principalmente studiati per utilizzo stradale, ciclo-cross e pista, sono ideali per i tubi sterzo a cuscinetto integrato, disponibili sia con gap-cap in carbonio e cuscinetti in titanio, sia con con sfere in materiale ceramico ad alta scorrevolezza. Per i più esigenti riders mountain-bike abbiamo appositamente creato Compass MTB 1,5", con gap-cap superiore ribassato da 8mm di altezza, realizzato in alluminio. Columbus Tubi e Columbus Carbon labs raccomandano l'utilizzo dei modelli appartenenti alla famiglia Compass su tutti i propri telai e forcelle in carbonio e sulle biciclette in acciaio equipaggiate con tubi Columbus.

Compass is the latest headsets-line designed by Columbus to match and complete its range carbon forks range. The Compass 1-1/8" and 1.5" models, primarily designed for road-race, cyclo-cross and track use, are ideal for head-tubes with integrated bearing, and available with carbon gap-cap and titanium bearings, as well as in a ceramic-bearing ultra-low friction version. For the most demanding mountain bikers we also have specially created Compass MTB 1.5", with a special aluminum gap-cap lowered by 8mm for an improved stability. Columbus Tubi and Columbus Carbon Labs strongly recommend the use of the Compass models in association of all the Columbus carbon frames and forks, as well as to assemble all the bicycles frames made with Columbus steel tubes.